

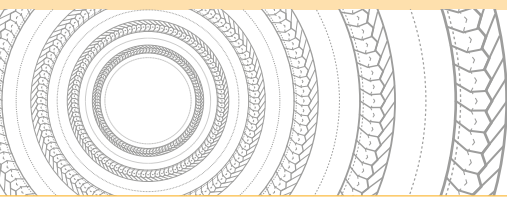


BRAIDED PACKINGS & RINGS

# LATTYflon 7188



**HIGH-PERFORMANCE SYNTHETIC  
PACKING FOR DYNAMIC SEALING**



# LATTYflon 7188

## BRAIDED PACKINGS & RINGS

### High-performance synthetic packing for dynamic sealing.

#### Characteristics

- ▶ Packing made of phenolic compound yarns, each single yarn being impregnated with PTFE using our exclusive Filcoat-process. The packing is then re-impregnated during braiding operation in a bath consisting of PTFE mixed with inert lubricant.
- ▶ This process reduces frictions, improves the yarn chemical protection and therefore provides better sealing efficiency.

#### Advantages

- ▶ Very good mechanical characteristics combining both suppleness and robustness/
- ▶ Withstands abrasive contaminated liquids
- ▶ Very easy fitting operation
- ▶ Reduced running-in time
- ▶ Reduced retightening operations
- ▶ Technical yarns properties that limit sleeve heat and wear
- ▶ Silicone-free lubricant
- ▶ Reduced maintenance time

#### Equipment

- ▶ Rotary and reciprocating applications

#### Industries

- ▶ Sugar
- ▶ Food processing
- ▶ Paper
- ▶ Steel

#### Parameters (not associated)

- ▶ Temperature: -220°C to +300°C
- ▶ Pressure: 0 to 200 bar
- ▶ Speed: < 20 m/s
- ▶ pH : 1 - 13

#### Dimensions

- ▶ Available in square sections from 6 to 25.4 mm.
- ▶ On request, available as preformed rings.



The information given in this document is for guidance only and does not commit LATTY international in any way. LATTY international does not warrant the performance of its products, unless properly fitted and used in accordance with the instructions, nor can it accept any claim for consequential liability.. LATTY International S.A. is only liable for the quality of its products as it does not involve itself in their fitting or use, which must be done in accordance with the instructions.



**Plant**  
1, rue Xavier Latty  
F-28160 BROU, FRANCE  
Tél. +33 (0) 2 37 44 77 77  
Fax +33 (0) 2 37 44 77 99  
customerservice@latty.com



[www.latty.com](http://www.latty.com)