

MECANIQUES / RACCORDS TOURNANTS / TRESSÉS / JOINTS / GARNITURES MECANQUES / RACCORDS TOURNANTS /  
GLEITRINGDICHTUNGEN / DREHDURCHFÜHRUNG / PACKUNGEN / FLACHDICHTUNGEN / GLEITRINGDICHTUNGEN /  
MECHANICAL SEALS / ROTARY UNIONS / PACKINGS / JOINTINGS / MECHANICAL SEALS / ROTARY UNIONS / PAC  
/ CIERRES MECANICOS / JUNTAS ROTATIVAS / EMPAQUETADURAS / JUNTAS / CIERRES MECANICOS / JUNTAS

**BRAIDED PACKINGS & RINGS**



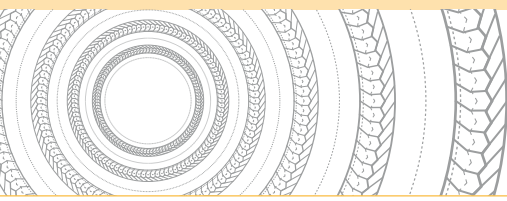
**LATTYflon 3206 / AL / CE**



**PTFE PACKINGS  
FOR ROTARY UNITS**

[www.latty.com](http://www.latty.com)





# LATTYflon 3206 / AL / CE

## BRAIDED PACKINGS & RINGS

### PTFE packings for rotary units

#### Characteristics

##### ▶ LATTYflon 3206

Packing made of 100% PTFE silk yarns, impregnated during braiding operation with inert lubricant. Available in square sections from 4 to 20 mm (available on request as preformed rings).

##### ▶ LATTYflon 3206 AL

Packing made of 100% PTFE silk yarns, impregnated during braiding operation with a mix of PTFE and inert lubricant. Available in square sections from 5 to 20 mm (available on request as preformed rings).

Approvals: ACS, FDA

##### ▶ LATTYflon 3206 CE

Packing made of 100% PTFE silk yarns, impregnated during braiding operation with a mix of PTFE and inert lubricant. Available in square sections from 5 to 20 mm (available on request as preformed rings).

Approvals: CE 1935 / 2004

#### Advantages

- ▶ Compatible with food
- ▶ Perfect chemical inertness
- ▶ Very low friction coefficient

#### Industries

- ▶ Food processing
- ▶ Chemicals
- ▶ Pharmaceuticals

#### Fluids

- ▶ Chemically aggressive

#### Equipments

- ▶ Rotary
- ▶ Valves and fittings

#### Parameters (not associated)

- ▶ Temperature: - 200°C to + 280°C
- ▶ Pressure: 0 to 100 bar
- ▶ Speed: < 10 m/s
- ▶ pH: 0 to 14



The information given in this document is for guidance only and does not commit LATTY international in any way. LATTY international does not warrant the performance of its products, unless properly fitted and used in accordance with the instructions, nor can it accept any claim for consequential liability.. LATTY International S.A. is only liable for the quality of its products as it does not involve itself in their fitting or use, which must be done in accordance with the instructions.



**Plant**  
1, rue Xavier Latty  
28160 BROU, FRANCE  
Tél. : +33 (0) 2 37 44 77 77  
Fax : +33 (0) 2 37 44 77 99  
customerservice@latty.com



Made in France

[www.latty.com](http://www.latty.com)